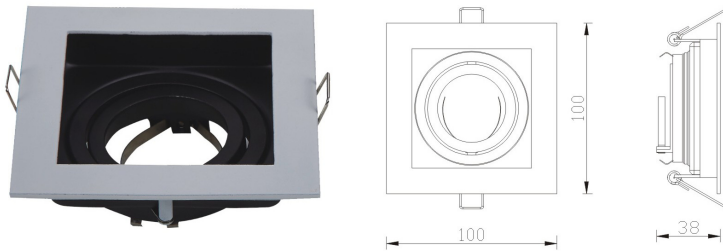


INSTALLATION INSTRUCTION

MODEL: VT-781 SQ
SPOTLIGHT FITTING

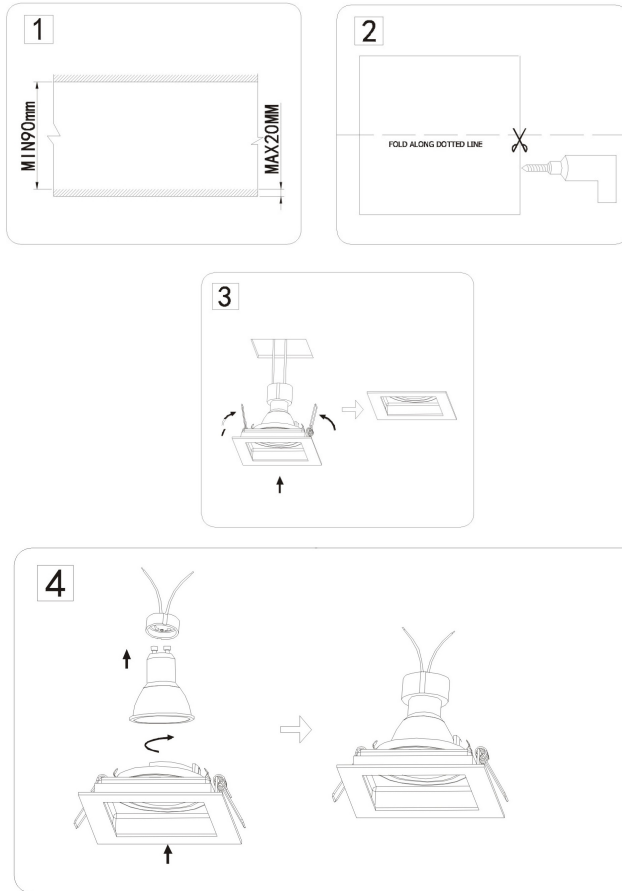


INTRODUCTION

Thank you for selecting and buying V-TAC LED SPOTLIGHT FITTING. V-TAC will serve you the best. Please read these instructions carefully before starting the installation and keep this manual handy for future reference. If you have any other query, please contact our dealer or local vendor from whom you have purchased the product. They are trained and ready to serve you at the best.

INSTALLATION INSTRUCTIONS

1. Switch off the power.
2. Ensure that the void depth is a minimum of 90mm, the thickness of ceiling is a maximum of 20mm (Picture 1)
3. Cut a hole using an appropriate tool according to the cut-out. (Picture 2)
4. Push the spring clips upwards and fit into the ceiling hole (picture 3), ensure the product is sitting properly in hole. (Picture 3)
5. Fit the bulb into the lamp holder, turn it clockwise till it locks. Clip the bulb at the back of the bezel.(Picture 4)
6. Switch on the power if above steps are done properly without any mistakes.



WARRANTY

- This product is warranted from manufacturing defect only.
- The warranty is valid for 2 years from the date of purchase.
- The warranty does not apply to damage caused by incorrect installation or abnormal wear and tear.
- The company gives no warranty against damage to any surface due to incorrect removal and installation of the product