


Input your WiFi SSID and password.

Add Device

1 2 3 4

Choose a WiFi



WiFi name Your wifi name

WiFi password Your wifi password

Remember password [Change WiFi](#)

NEXT

Add Device

1 2 3 4

Name this device



Such as your light

Named your device to complete.

COMPLETE

When the green light keeps on, the device is online. Start to control now!

V-TAC®

SMART HOME

WiFi WATERPROOF SOCKET USER GUIDE

Parameter:
Model: VT-5000 SKU:8414
Rated Voltage: 90V-250V AC
Max. Current: 10A
Wireless Standard: Wi-Fi 2.4Ghz
Material: PC



Alexa/Google Home Tutorial



FAQ



Multi language Manual



Google Paly

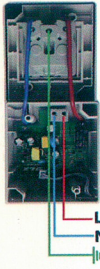


IOS

1. Install V-TAC Smart Home App into smart phone or tablet device. Or scan the QR code, download and install into smart phone or tablet device.

2. Power up
ON/OFF operating principle
The connected appliances work/stop through live wire power on/off

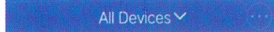
Lights wiring instruction



Pairing button

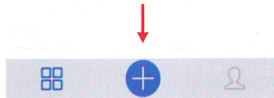
3. Cut off the power.
Use screw driver to open the front cover.
Connect the wires correctly.
Install and power it up.

4. Set up
Press and hold up button for about 6 seconds until the Wi-Fi GREEN LED repaid flashes.

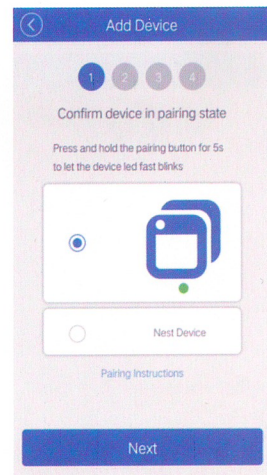


No devices currently, tap on below button to add

Tap "+" on Smart Home APP



Select the first part



IOS user can try the second option(AP), manual configuration.