

PRODUCT INTRODUCTION

This panel lighting fixture is with LED diode, has advanced technology, energy savings and environmental protection, long life span, saving electricity cost and almost no maintenance time and cost needed. It has 100% efficiency and brighter than any other old fixtures.

PRODUCT OVERVIEW

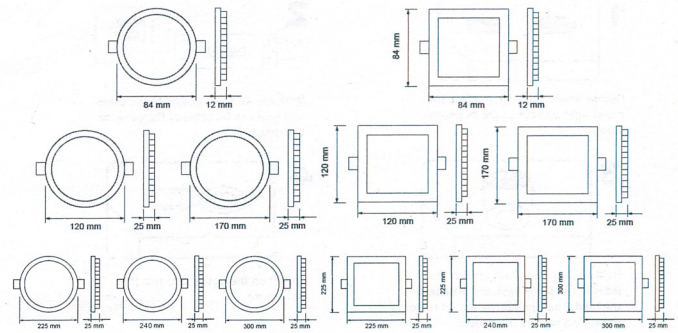
No maintenance, easy to install, high efficiency, low electricity, power saving, long life span, low temperature and no glare.

APPLICATION USAGE

The LED Panel light can be used in hotels, offices, factories, conferences, meeting rooms, commercial complexes, residential buildings, schools, colleges, universities, hospitals, etc.

TECHNICAL PARAMETERS

Model No:	VT-307	VT-607	VT-1207	VT-1807	VT-2207	VT-2407	VT-3107
Power:	3W	6W	12W	18W	22W	24W	30W/36W
Direct Connect Voltage:	5-12	12-24	24-48	26-72	54-100	54-100	75-144
Lumens:	210lm	500lm	1000lm	1500lm	1800lm	2000lm	2400lm
Beam Angle:	120°	120°	120°	120°	120°	120°	120°
CRI:	80	80	80	80	80	80	80
Protection Rating:	20	20	20	20	20	20	20
Operating Temperature:	-20°C to +40°C	-20°C to +40°C	-20°C to +40°C	-20°C to +40°C	-20°C to +40°C	-20°C to +40°C	-20°C to +40°C
Unit size:	Ø84*12mm	Ø120*12mm	Ø170*12mm	Ø225*12mm	Ø240*12mm	Ø300*12mm	Ø300*12mm
Cut size:	Ø73mm	Ø110mm	Ø160mm	Ø210mm	Ø220mm	Ø280mm	Ø280mm



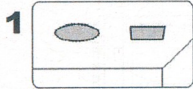
INSTALLATION REQUIREMENTS

- Install only by certified electrician.
- Please connect with the driver properly before connecting main supply.
- Proper grounding should be ensured throughout installation.
- The lighting should be located in dry areas.

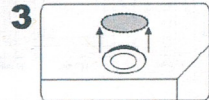
NOTICE

- Lighting installation should not be covered. Leave some space around the fixture for ventilation.
- Risk of shock, hence disconnect at fuse or circuit breaker before installation or servicing.
- Risk of fire, supply conductors (power wires) connecting fixture must be rated minimum 90°C. If uncertain, consult electrician.

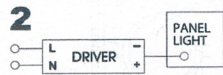
INSTALLATION INSTRUCTION



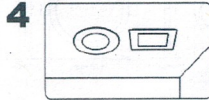
Decide where you wish to place the panel light and cut a hole as per the cutout.



Hold the two clips back against the sides of the panel light and push into the hold. The clip then lie flat on top of the ceiling holding it in place.



Wire the AC source cable to the driver and wire the DC cable of the panel to the driver.



Switch on the power and test the panel light

WARRANTY

- This product is warranted from manufacturing defect only.
- The warranty does not apply to damage caused by incorrect installation or abnormal wear and tear.
- The company gives no warranty against damage to any surface due to incorrect removal and installation of the product.

WARNING

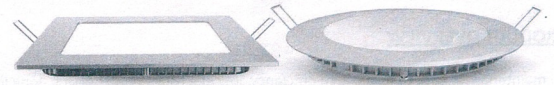
- The product uses a very high power LED. As with any light source, direct viewing should be avoided.
- NOTE: Although easy to fit, this lamp requires wiring to the main and for safety should only be fitted by a qualified electrician.
- Having issued this warning, the company accepts no responsibility for issues arising from any failures to comply with these clear instructions.
- The company will not accept any responsibility for any other issues arising from improper use of fitting of this product as these materials are beyond our control.

In case of any query /issue with the product please reach out to us at support@vtacexports.com

WEEE Number: 80133970

INSTALLATION INSTRUCTION

LED SLIM SERIES PANELS



Model: VT-307, VT-607, VT-1207, VT-1807, VT-2207, VT-2407, VT-3107

Power: 3W, 6W, 12W, 18W, 22W, 24W, 30W, 36W

!Warning

Turn off power before inspection, installation or removal
Please do not connect the panel directly to 220V, Please connect with the driver first.

INTRODUCTION

Thank you for selecting and buying V-TAC LED Emergency Spotlight. V-TAC will serve you the best. Please read these instructions carefully before starting the installation and keep this manual handy for future reference. If you have any other query, please contact our dealer or local vendor from whom you have purchased the product. They are trained and ready to serve you at the best.